



# Virtual Tea Session

@ Waterway Primary School

By Little Professors Learning Centre





# Contents

1. Who We Are
2. LP Vision and Mission
3. A Day in LP
4. Things to Bring Daily
5. Healthy Meals in School Programme
6. Menu
7. Homework Supervision Policy
8. Reporting Process
9. Dismissal Process
10. Closure Dates
11. Operating Hours
12. SCC Fees
13. Contact Us





## WHO WE ARE

## About Little Professors

- Little Professors have been operating Student Care services since 2005 and KCare services since 2019.
- We provide Care services to more than 1500 children island wide.
- We believe in balancing both nature and nurture in providing our children with a holistic experience.
- We provide a safe and conducive environment for our children to play, explore and discover.



## About Little Professors

### OUR VISION

To be a premier Student & KCare Centre that nurtures children by developing in them a strong character, a positive attitude and sound ethics, where every child experience unconditional love.

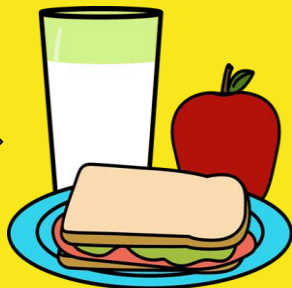
### OUR MISSION

- Quality Care
- Holistic Approach
- Social Responsibility

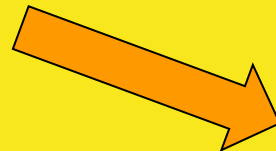
REPORTING



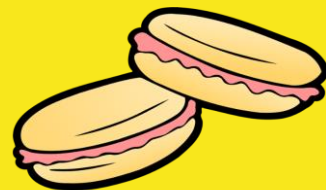
LUNCH



HOMEWORK



TEABREAK



LP  
PROGRAMMES



READING &  
RECREATION



HOME



\*THIS TIMETABLE IS FOR REFERENCE ONLY



# School Day Timetable

Time (Hrs)	Monday	Tuesday	Wednesday	Thursday	Friday
Dismissal to 1400	Lunch				
1400 to 1430	7 Habits Assembly Talk	Heads Down/ Wash Up			
1430 to 1500	Heads Down/ Wash Up				
1500 to 1600	Homework/ Spelling/ Self Revision				
1600 to 1630	Tea Break				
1630 to 1800	BOKS Lab	Art Lab	Creative Yoga Lab	Character Counts! Lab	STEM Lab
1800 to 1830	Community Gardening/ Reading and Recreation				
1830 onwards	Home Sweet Home				

\*THIS TIMETABLE IS FOR REFERENCE ONLY



# Full Day Timetable

Time (Hrs)	Monday	Tuesday	Wednesday	Thursday	Friday
0730 - 0830	Arrival				
0830 - 0900	Breakfast				
0900 - 1000	Community Gardening				
1000 - 1100	GoNoodle				
1100 - 1230	Cooking Lab	Art Lab	Creative Yoga Lab	Kitchen Science Lab	STEM Lab
1230 - 1300	Lunch				
1300 - 1330	Heads Down/ Napping				
1330 - 1430	Homework Help/ Self Revision/ Quiet Reading Time				
1430 - 1600	BOKS Lab	Speech and Drama Lab	Craft Lab	Essential Life Skills Lab	BOKS Lab
1600 - 1630	Tea Break				
1630 - 1830	Indoor/Outdoor/ Ball Games/ Reading and Recreation				



Things to bring  
to LP daily

Attire: Little Professors

Tshirt + School Skirt/Shorts

1.Communication Book

2.School/Parents Homework  
(if any)

3.Thermometer

4.Water bottle







Things to bring  
to LP daily

Your child will be given a  
Communication Book.  
Please ensure that he/she  
brings it to school daily to  
facilitate communication  
between parents and the  
teachers.



## Primary 1 to 6

Students who are enrolled in Little Professors will be waiting for our LP teachers in their SCC holding area and/or respective classrooms.

Our LP teachers will be fetching the students from their SCC holding area and/or respective classrooms accordingly and will facilitate the students for the day.

Reporting Process  
(1st week of school)



\*MENU IS FOR REFERENCE ONLY

# Menu

## Menu

Menu may be subjected

January: Week 3

	Mon	Tue	Wed	Thu	Fri
Lunch	Butter Rice	Steamed Rice with Veggie Bites	Sin Chew Bee Hoon	Fragrant Jasmine Rice	Butter Rice
	Honey Glazed Grilled Chicken	Poached Fish with Black Sauce	Crispy Chicken Nugget	Black Bean Paste Chicken	Fish Fillet with Tartar Sauce
	Mixed Veggie with Potato	Steamed Tofu with Veggie	Stir Fried Cabbage with Mushroom	Nonya Chap Chye	Cauliflower with Tomato
Teabreak	Assorted Buns	Swiss Rolls	Wafer Sticks	Bread with Assorted Spreads	Seasonal Fruits

Our catered foods (From our caterer or school canteen) are halal and we also have vegetarian options.

\*Kindly let us know upon registration if your child has any food allergies.

## 1. Food in the 4 food groups:

- Brown rice  
& Wholemeal bread
- Fruit
- Vegetables
- Meat & others

## 2. Vegetables and Fruit in the following amounts:

- Vegetables: At least 2 dessert spoons
- Fruit: At least  $\frac{1}{2}$  serving

## Healthy Meals In School Programme



## Healthy Meals In School Programme

- 3. Use of lean meat
- 4. Less oil and salt
- 5. Wholemeal Bread at teabreaks







# Healthy Meals In School Programme





# Healthy Meals In School Programme



## Clean Plate Policy



## Healthy Meals In School Programme

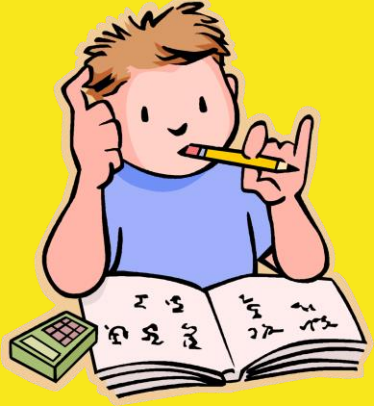
Our SCC practices the clean plate policy where the students can ask for a second serving when they have finished all the food on their plate.



# Homework Supervision Policy

Our staff will:

- Monitor school homework closely
- Encourage children to complete homework and do self checking
- Conduct spelling practice for English and Chinese



# Homework Supervision Policy

Our staff will NOT be:

- Doing homework for your child
- Teaching your child how to do the homework
- Checking for accuracy of homework questions





YOGA LAB



# Little Professors Programmes



STEM LAB

BOKS LAB





# Little Professors Programmes



ARTLAB



CHARACTER COUNTS LAB



# Little Professors Programme(Holiday)

- COOKING LAB
- CRAFT LAB
- SPEECH AND DRAMA LAB
- LIFE SKILLS LAB
- KITCHEN SCIENCE LAB





# SMM Practices



LP Dismissal will be facilitated via the main gate (security post).

Our LP staff will be stationed at the Gate, to help assist your child's dismissal. Authorised caregiver can inform the staff upon arrival.

Otherwise, authorised caregiver can whatsapp us 20 mins earlier and we will prepare your child for dismissal to the gate.

## Dismissal Process





In the event that an authorised caregiver is unable to pick your child, please inform us in advance via the communication book or call our main line, indicating the name of the person and his/her last 4 digits of NRIC number.

The alternate caregiver would need to produce identification for verification.

## Dismissal Process



## LATE PICK UP

- Our centre operates until 7 pm
- Pick-up after 7pm will incur late charges

## LATE CHARGES

- First 15 mins after centre is closed - \$10
- After 15 mins, additional \$5 per 15 mins

## Dismissal Process



# Operating Hours

Our operating hours are:

School days:

After school to 7.00 pm

School holidays:

7.30 am to 7.00 pm



Our centre will be operating till  
2pm on the following days in 2022:

Chinese New Year's Eve

Christmas Eve

New Year Eve

Special Operating  
Hours



Our centre will be operating on Special Hours/ Closed, during the PSLE Examinations in 2022:

PSLE Oral Examinations

PSLE Listening Comprehension

We will share more details in 2022 when we have the details.

Special Operating  
Hours



Our centre will be closed on  
ALL PUBLIC HOLIDAYS as well as  
the following dates in 2022:

## Closure Dates

Teachers' Day

Training Day on the Monday after Teachers' Day

Children's Day

Training and Spring Cleaning Days on last 3  
Working Days before New Year's Eve





Monthly Fees:  
\$230

SCC Fees

Monthly Student Care Fee	\$230	Before SCFA Subsidies, if any
Registration Fee	\$30	One-Time, Non Refundable
T-Shirts (\$15/Piece)	\$45	MSF Recommendation for uniform capped at 3 days requirement
Deposit	\$230	Refundable with one month written notice
Total Fee Payable	\$535	Payable upon registration



## Contact Us

Centre Phone Number:

**8201 2475** (Please call during our operating hours)

Kindly save our number to your contact list. You may wish to WhatsApp us for ad-hoc dismissal timings, report absence, reply to surveys or consent forms or if you need our team to give you a call.

Centre Email: **waterway@littleprofessors.com.sg**





Thank you