

After watching the video, how would you feel if you are the hedgehog?

Don't you think there is a need for everyone to feel supported and cared for?

Introducing to you...

WAPS Peer Support Relationship (PSR)





Why PSR?

We want all waterway primary students to:

- Feel safe
- Be accepted
- Feel empowered



What does it mean to be a peer supporter?



Peer Bonding

Peer Helping



Peer Influencing



School Culture of Care

Leads to

- Positive child and youth development
- Improved student learning
- Improved academic achievement

(Source: A review of School Climate Research, Amrit Thapa, Johnathan Cohen, Shawn Guffey and Ann Higgins-D'Alessandro, 2013)



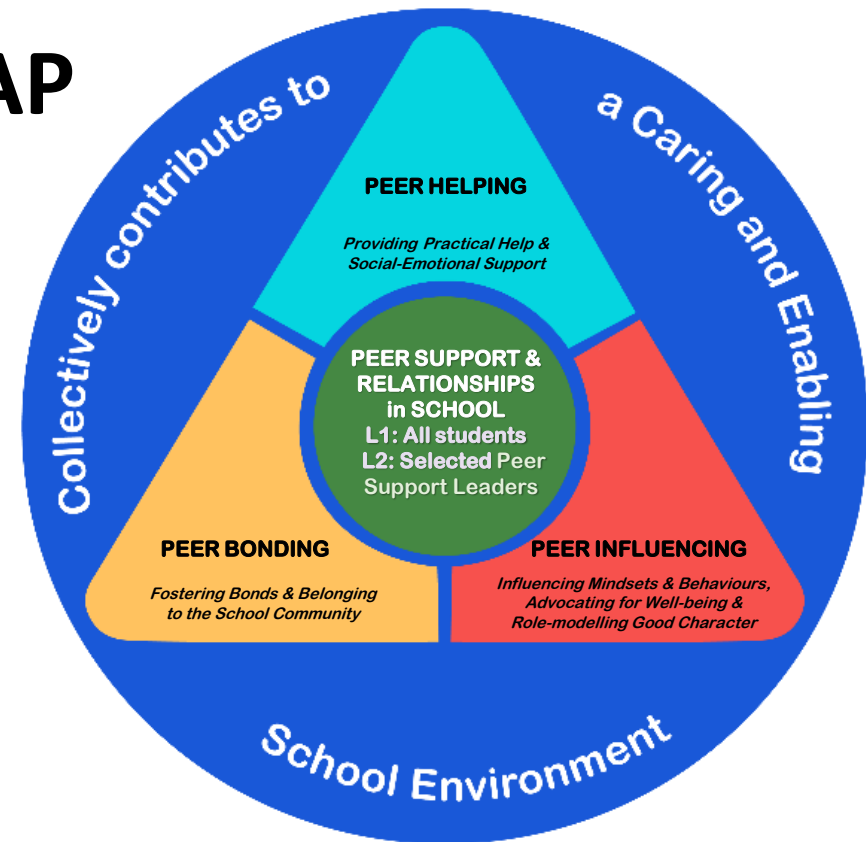
Three Domains of PSR in WAP

- Peer Bonding
- Peer Helping
- Peer Influencing

Two levels of PSR

Level 1: Every student a peer supporter

Level 2: **Selected students as Peer Support Leaders (PSLs)**





Who are the Peer Support Leaders?

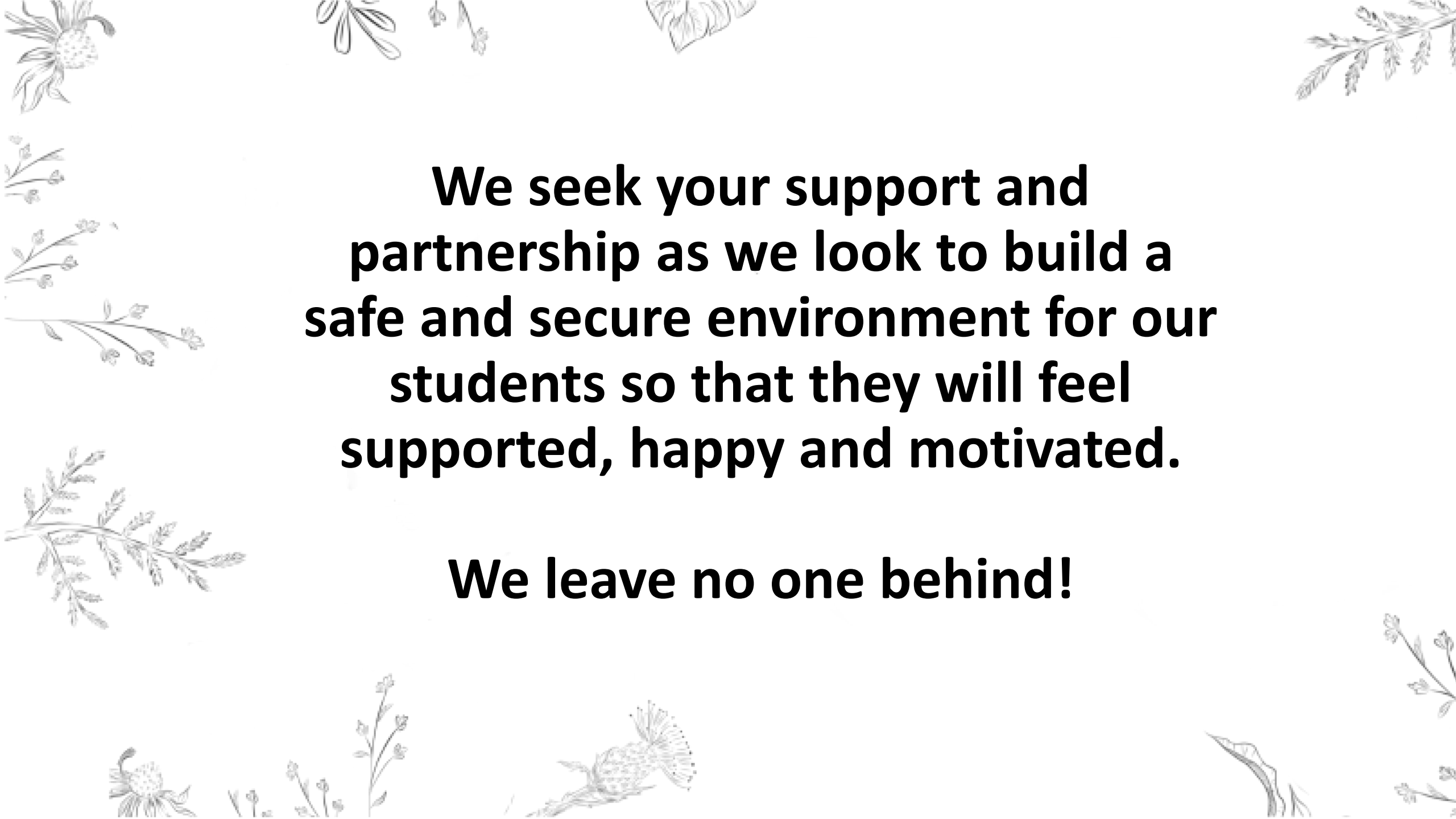
- Demonstrate good interpersonal relationships with others.
- Possess empathy to reach out to befriend those who may be lonely or need help.
- Contribute towards a caring school culture in class and beyond.
- A positive influence to others.

*Recognised as part of the school's student leadership structure

How will our PSLs grow through this journey?

- Mentored by teachers known as PSL mentors (Includes fortnightly check-ins, PSL training and supported by school counsellor)
- Develop skills in active listening and effective communication
- Greater self-awareness and self-care
- Develop as a student leader





We seek your support and partnership as we look to build a safe and secure environment for our students so that they will feel supported, happy and motivated.

We leave no one behind!